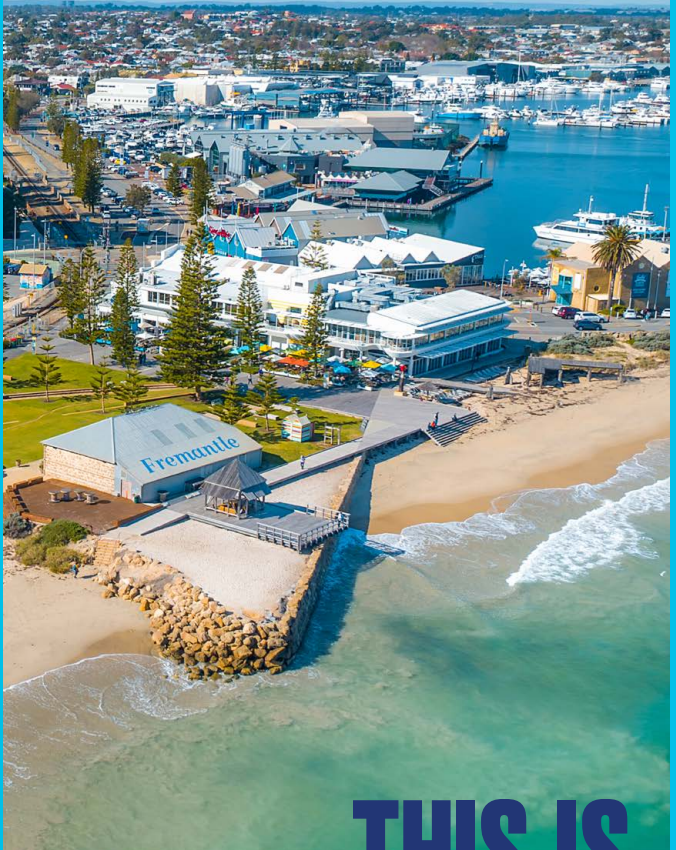


# DISCOVER FREMANTLE



# THIS IS FREMANTLE

[visitfremantle.com.au](http://visitfremantle.com.au)



### 1. Walyalup Koort

Walyalup is the Nyoongar name for an area that includes Fremantle and Koort translates to heart.

Fremantle Town Hall (c1887) constructed in the Victorian Free Classical style with a 32-metre-high clock tower was heritage listed in 1993. Restoration was completed in 2017.

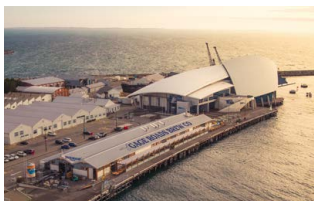
The original Georgian-style St John's Anglican Church opened in 1843 close to the present site. In 1882, to allow for the construction of the town hall and High Street, it was replaced with the current larger Gothic building.



### 2. West End

The corner of High and Market Streets marks the entrance to one of the largest single places to be permanently included in the State Register of Heritage Places. With 250 buildings and over 200,000m<sup>2</sup> it is one of the best preserved and most intact towns built during the 19th century gold boom era in Australia.

Federation style merchant warehouses, ornate facades and grand Australian hotels line the streets. Browse independent boutiques, art galleries, bookshops, hidden bars, an award-winning distillery, artisan stores and eateries.



### 3. Victoria Quay

Victoria Quay overlooks Fremantle Harbour, WA's largest working port and the departure point for ferries to Rottnest Island (Wadjemup) and river cruises to Perth.

Look for the bronze statue of CY O'Connor, the first Engineer-in-chief of Western Australia, best known for the Goldfields Water Supply Scheme, who began construction of the harbour in 1892.

The waterfront is home to Gage Roads Brewery, E Shed Markets, STS Leeuwin II (when in port), WA Maritime Museum and HMAS Ovens submarine (bookings required). Open daily 9.30–5.00pm, charges apply.



### 4. Round House and Whalers Tunnel

WA's oldest public building opened 18 January 1831 originally as a gaol. Later uses included a police lock-up, living quarters and storage facility. It accommodated colonial and Aboriginal prisoners, including Nyoongar leader Yagan and was the site of the colony's first public execution of a European settler-15-year-old John Gavin.

In 1837 the Fremantle Whaling Company requested a tunnel be cut through to provide access between the beach and town. Open daily 10.30am-3.30pm (canon firing at 1pm). Entry by donation.



## 5. Kidogo Arthouse

The former kerosene store was built in 1884 on reclaimed land and used to store dangerous goods away from other buildings but close enough to the Long Jetty where goods would be offloaded from ships. At the time, kerosene was used extensively for street lighting and heating.

Between 1975–1997 it was the studio of well-known ceramist Joan Campbell. It was vested in the City of Fremantle in 1982 and restored as part of the Commonwealth-funded Arthur Head Bicentennial Project in 1986–87.



## 6. Bathers Beach (Manjaree)

Manjaree, as the area is known by the Whadjuk Nyoongar people, was an important place of trade and where families gathered for kinship and law making.

Manjaree Trail starts at Kidogo Arthouse and offers information about Nyoongar seasons, bush tucker and trade.

It is the place where, in 1829, Captain Charles Howe Fremantle landed and proclaimed the land as British territory.

This inner-city beach is a popular place to swim, eat or enjoy a drink at Australia's first licensed beach, Bathers Beach House.



## 7. Fishing Boat Harbour

Connected by a series of boardwalks this working harbour is lined with seafood restaurants, cafes and Little Creatures Brewery. It has been a favourite place for family outings for generations.

You can see several sculptures by local artist Greg James including 'Bella'; a life-size figure of the late Bon Scott who was the lead vocalist of AC/DC; "The Jetty" commemorates the local fisherman.

Sardine Jetty is the departure point for Jet Boat Adventures and Whale Watching Cruises.

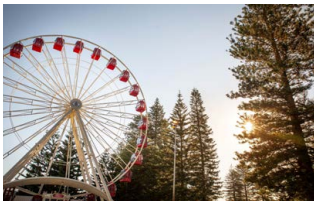


## 8. WA Shipwrecks Museum

Internationally recognised for its contributions to maritime archaeology and shipwreck conservation, the museum is recognised as the foremost maritime archaeology museum in the southern hemisphere. Galleries feature relics from ships wrecked along Western Australia's treacherous coast including the Dutch vessel Batavia, first European encounters and riches of maritime trade.

The museum is housed inside Fremantle's historic Commissariat buildings built to store food, clothing and building supplies for the Swan River Colony.

Open daily 9.30am–5.00pm, suggested donation \$5.



## 9. Esplanade Reserve and Old Shoreline

The reserve is on land reclaimed from the sea in 1900. The original shoreline runs along the north side of Marine Terrace and is marked with a paved trail created by local ceramist Joan Campbell.

One hundred Norfolk Island Pines planted in 1908, form part of Fremantle's iconic skyline. Ride the Tourist Wheel for 360-degree views over Fremantle.

The family friendly Esplanade Youth Plaza opened in 2014 on the southeastern corner of the reserve and features a skate park, rock climbing and parkour.



## 11. Fremantle Prison

Fremantle Prison is the largest convict-built structure in Western Australia and the most intact convict establishment in the nation.

Decommissioned as a maximum-security gaol in 1991, the Prison was continuously used as a place of incarceration for almost 140 years.

In 2010, it was the first building in Western Australia to be included on the UNESCO World Heritage list as part of a serial nomination with ten other Australian convict sites.

Open daily 9.00am–5.00pm with the first tour departing at 10.00am. Entry fees apply.



## 10. Fremantle Markets

Established in 1897, Fremantle Markets is one of only two surviving municipal markets buildings in WA and one of the few that continues to be used for its original purpose.

The main building is home to over 150 market stalls selling artisan wares, fashion, homewares and gifts. The Yard offers international street food and fresh local produce.

Buskers and street performers can often be found at pitches inside and outside the markets.

Open Friday, Saturday and Sunday (and Public Holiday Mondays) 8.00am–6.00pm.



## 12. Fremantle Arts Centre

Built by convicts as the Convict Establishment Fremantle Lunatic Asylum and Invalid Depot in 1864. Before opening as an arts centre in 1973, the site has been a Women's Home and maternity training school, billeted American naval servicemen and a technical school.

It is now a leading arts organisation in Australia with a program of art exhibitions, concerts and events. There is a cafe within the grounds and FOUND Shop sells a range of WA-designed wares.

Open daily 9.00am–5.00pm, free entry.

## Have you got time to see a little more?



### 13. Rainbow

A brightly coloured art installation constructed from nine shipping containers form the shape of a giant rainbow as a universal symbol of hope and inspiration. Rainbow stands 9 metres high and 19 metres long and weighs 66 tonnes.

Commissioned by the City of Fremantle it was installed in 2016. Rainbow by Perth artist Marcus Canning became one of Fremantle's most photographed artworks and nicknamed Containbow.



### 14. Army Museum of Western Australia

Located in an historic artillery barracks, the museum is a sub-unit of the Australian Army History Unit (AAHU) and is part of a network of regional museums throughout Australia.

The museum houses several galleries exhibiting items from Australian Army Traditions, Pre 1914, WWI, WWII, POW and Post 1945 including three Victoria Crosses.

Open Wednesday, Thursday, Friday and Sunday 10am–3pm, with the last entry at 1pm. Charges apply and photo ID required.



### 15. Monument Hill

At 43 metres above sea level and with panoramic views of the city, harbour and ocean, Monument Hill is a popular place to picnic, relax on the lawns, reflect and watch the sunset.

Monument Hill Reserve is a place of remembrance and quiet solitude. The Fremantle War Memorial obelisk sits on the summit of the reserve surrounded by smaller memorials and plaques. It is the site for the annual Anzac Day Dawn Service and Remembrance Day services.



### 16. South Fremantle

A relaxed coastal neighbourhood with a collection of cafes, restaurants, a brewery/distillery, collection of street art, small bars, artisan bakehouses, neighbourhood pubs and small boutiques.

South Beach, the 'Brighton of the West' with its large grassy areas, century old Norfolk Island pines and Moreton Bay fig trees, has been a place for family picnics, swimming and beach walks since 1897. The first official horse race in Western Australia was held at South Beach in 1833.

# FREMANTLE



**THIS IS  
FREMANTLE**  
WESTERN AUSTRALIA

## Online

[visitfremantle.com.au](http://visitfremantle.com.au)

## Email

[info@visitfremantle.com.au](mailto:info@visitfremantle.com.au)

## Phone

08 9431 7878

## Fremantle Visitor Centre

155 High Street Fremantle WA 6160

## Opening hours

Monday–Friday

9am–5pm

Saturday

9am–4pm

Sunday & Public Holiday

10am–4pm

Christmas Day & Good Friday

Closed



[#thisisfremantle](https://www.instagram.com/thisisfremantle)



**THIS IS  
FREMANTLE**  
WESTERN AUSTRALIA

[#thisisfremantle](https://www.instagram.com/thisisfremantle)